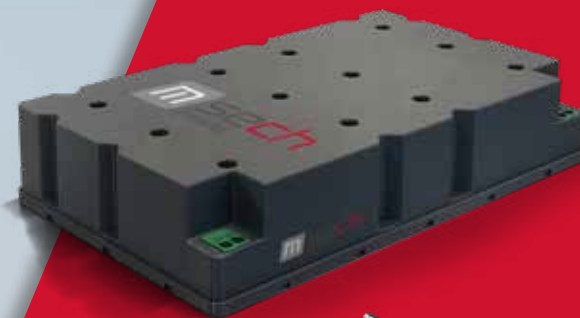


- Modules that meet customer specifications
- High energy and power density
- Excellent DC and cycle life performance
- Reliable operation over a large temperature range
- Robust and vibration proof design for tough environmental conditions
- Compact and low weight design
- Passive cell balancing
- Ideally suited for high reliability demanding applications such as power supply for wind turbine pitch system



No limits!

**Tailor made modules for
maximum reliability and safety**